

# Closer working with Kingston Hospital

**T**he Trust is in discussion with the board of Kingston

Hospital regarding setting up a chemotherapy unit run by the Royal Marsden within

Kingston Hospital.

The partnership forms part of the Royal Marsden's vision for a 'managed care network' within South West London which aims to develop cancer services locally and speed up access to diagnosis and treatment. It aims to minimise travel requirements for patients and ensure they receive a seamless transition between the different organisations delivering their care. The unit, planned to be launched next year, would be staffed and managed by the Royal Marsden and provide a first class service for the delivery of chemotherapy. ■

## Bottle of Bubbly!

**C**ongratulations go to Mrs Patricia Thorns for her prize-winning suggestion that a letters column could be established in *Foundation News*.

Of course, this idea can only get off the ground if members send in their views, so please do get in touch

with Sarah Peters, Membership Support Manager (see *Keep in touch*).

A bottle of champagne is winging its way to Mrs Patricia Thorns. ■



## Rapid Diagnostic Unit for Chelsea

**P**lans are underway to develop a new rapid diagnostic unit for patients with suspected breast or prostate cancer at Chelsea, following the success of the Stanley Cohen Rapid Diagnostic and Assessment Centre in Sutton.

### Location

Cally Palmer, Chief Executive, reported at the Membership Council meeting on 14 July that the Royal Marsden is currently investigating where this service would be best located, whether on the site of the Royal Marsden in Chelsea or elsewhere in the area, and assessing the relative benefits and cost implications of the various options. ■



# Annual Report

**D**evelopments which have taken place in cancer treatment, care, research and education during the past financial year at the Royal Marsden are highlighted in the Royal Marsden's Annual Report 2004/05.

Published this month, the report also features striking photographs and quotes

from patients taken by photographer Tim Wainwright as part of a 16-month Artist in Residency project. A summary of the hospital's annual accounts is also presented in the report. Visit [www.royalmarsden.nhs.uk](http://www.royalmarsden.nhs.uk) to view an electronic version, or contact the Press Office on 020 7808 2107 for a copy. ■



## Dates for your diary

### Annual General Meeting

Wednesday 28 September at 4.30pm at the Education and Conference Centre, Stewart's Grove next to the Royal Marsden in Chelsea. Refreshments are available from 4pm in the refectory. Please note the change of venue from Sutton to Chelsea. If you wish to attend, please advise the Foundation Trust Office.

### Membership Council Meeting

Monday 12 December from 11am – 1pm in the refectory, the Education and Conference Centre, Chelsea. Coffee is served from 10.30am and everyone is welcome to stay for sandwiches at 1pm. Please advise the Foundation Trust Office if you are planning to attend. ■

## Keep in touch

### FOUNDATION TRUST OFFICE

The Royal Marsden  
NHS Foundation Trust,  
Fulham Road,  
London SW3 6JJ  
Tel: 020 7808 2446/2844  
Freephone: 0800 587 7673  
e-mail: [sarah.peters@rmh.nhs.uk](mailto:sarah.peters@rmh.nhs.uk)

### HOSPITAL ADDRESSES

The Royal Marsden  
Hospital, Fulham Road  
London SW3 6JJ  
Tel: 020 7352 8171

The Royal Marsden  
Hospital, Downs Road,  
Sutton, Surrey SM2 5PT  
Tel: 020 8642 6011

[www.royalmarsden.org](http://www.royalmarsden.org)

# Foundation NEWS

The newsletter for members of The Royal Marsden NHS Foundation Trust • September 2005

## Cancer Campaign on road to success

**R**aising £30 million to make a difference to people with cancer was the extraordinary challenge the Royal Marsden set two years ago.

Now, thanks to overwhelming support from patients, carers, staff, fundraisers and Foundation Trust members, the hospital is well placed to reach its fundraising target by the end of the year.

### Launched

The Royal Marsden Cancer Campaign's appeal was publicly launched in April 2004, to raise funds for five key projects; a PET/CT scanner, Drug Development Centre, Critical Care Unit, Operating Theatres and a Diagnostic Centre. These schemes were incorporated in the hospital's application for Foundation Trust status, following extensive consultation.

*The Drug Development Centre is already bringing hope to cancer patients*

The appeal was themed 'an ordinary day in an extraordinary place'. Fundraising brochures were produced which included diaries from members of staff reflecting their 'ordinary' days and a website, [www.royalmarsden.org/campaign](http://www.royalmarsden.org/campaign), was specially created.

Sponsor a Day calendars were launched, a successful initiative which encourages people to make a donation to mark a special day.

Extraordinary people lent their support by doing 'ordinary' things for the hospital, with Joan Collins becoming a hospital tea lady for an afternoon, Chris Tarrant and Russ Kane serving breakfast in the canteen, and Sir David Frost taking the confectionary trolley to patients on the ward.

Just as significantly, thousands of 'ordinary' people have been doing extraordinary

things, including trekking across mountain paths in Peru, cycling from London to Paris and taking part in fun runs to collectively raise millions of pounds for the Cancer Campaign.

### Diaries

Patients and staff have been raising awareness by keeping online diaries documenting their experiences at the Royal Marsden. Other initiatives include the publication of the Facing Cancer Guide, to help family and friends support a loved one with the disease.

Help from corporate and business communities has also been enlisted, and a recent highlight was Rock by the River, a private concert by Bryan Adams followed by a charity auction, which boosted the appeal by a further £1.3 million.

### Overwhelmed

Angela Roden, Fundraising Director, said: "This has been a truly extraordinary appeal and we'd like to thank everyone who has helped us to reach the £26 million milestone. We have been overwhelmed by the generosity of all our supporters.

"Patients are already benefiting from the funds raised so far. For example, a third of patients scanned by the new PET/CT scanner have already had their treatment changed as a result, and up to

200 people a year are now receiving novel therapies at our Drug Development Centre.

"The good news is we're nearly there. Nearly. But we still have £4 million to raise by Christmas, so we are relying on the continued efforts of our supporters and on all those who haven't supported us



before, to ensure we reach our target."

Please visit our website: [www.royalmarsden.org/campaign](http://www.royalmarsden.org/campaign) or call our Fundraising Team on 020 8770 0279 to help 'Make our day'. ■

## IN THIS ISSUE

- How the Royal Marsden is performing
- New Councillors are finding their way
- Closer working with Kingston Hospital

# Three stars



**T**he Royal Marsden has done it again – the Trust has achieved the top score of three stars in the 2004/05 NHS performance indicators for the fourth year in a row.

As many members will be aware, the Healthcare Commission annually assesses the performance of healthcare organisations throughout the country.

The Royal Marsden achieved, and in most cases exceeded, all key targets in the following categories: two-week

cancer waits; elective patient waiting times; outpatient waiting times; outpatient and elective (inpatient and day case) bookings; hospital cleanliness and financial management.

The Trust was placed in the top band of performance in the areas of patient focus, clinical focus and capacity and capability. The Royal Marsden is also among 28 Trusts which achieved above average scores for the control of MRSA.

"We are delighted to have been awarded three stars for

the fourth consecutive year," said Cally Palmer, Chief Executive.

## Outstanding

"I would like to thank all staff for their outstanding commitment, skill and professionalism, which has ensured we have retained our three stars and gives patients confidence that the Royal Marsden provides the highest standards of cancer care."

The Commission is introducing a new health check next year, designed to give a more comprehensive picture of NHS performance. ■



# One year on

**F**oundation Trusts are making progress in developing new services and improving accountability to their local populations, according to a report by the Healthcare Commission.

## Progress

The Commission's Review of NHS Foundation Trusts

found that since achieving Foundation Trust status, trusts were making progress in developing new services and improving accountability to their local populations. The Commission also found that many of the concerns and fears that had been initially expressed about NHS Foundation Trusts were not evident in the period of the review.

The Commission recommended that a clearer policy framework needed to be developed to enable NHS Foundation Trusts to take forward long term planning

and investment. A further review is planned following two full years of operation. For more details visit [www.healthcarecommission.org.uk](http://www.healthcarecommission.org.uk) ■



BULLETIN ■ BULLETIN ■ BULLETIN ■ BULLETIN ■ BULLETIN

# Better Healthcare

**W**ork is continuing on the development of plans for a Critical Care Hospital co-located with the Royal Marsden in Sutton, and 10 local care hospitals. The project known as 'Better Healthcare Closer to Home', aims to offer 80% of outpatient care in a local hospital setting, with inpatient care and specialist services previously offered by Epsom and St. Helier Hospitals in the new Critical Care Hospital.

In practical terms, Epsom and St. Helier clinicians and

managers are working with Royal Marsden colleagues on a service and estate strategy to maximise the advantages of co-location. This means looking at how patient pathways (various stages of a patient's treatment) could be improved, and working out which services should be on site, how they will be delivered, and the extent to which it is sensible to integrate some services between the two hospitals.

This is particularly important in surgery and critical care because there is currently limited provision at the Royal Marsden in Sutton. The advan-

tages and disadvantages of a single diagnostic centre are also being considered. Important issues for the Royal Marsden are to maintain its specialist focus and high standards of performance, to ensure there is added value to patients as well as the NHS from any investment and change on this site, to protect research capacity, and to ensure adequate capital investment in cancer services.

## Welcomed

Cally Palmer, Chief Executive, said: "The Membership Council and Board have welcomed this initiative because it will offer our patients the advantage of

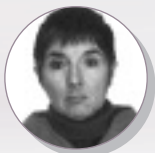
a range of specialities on site which may be required to support their specialist treatment by the Royal Marsden. It will also mean that the focus for NHS development will be at the Sutton site, which needs modernisation to ensure services are fit for the 21st century."

The service strategy for Sutton is planned for completion by December, and estate issues will be addressed through a consultation process known as 'Enquiry by Design' due to be held this autumn. There is a high level of collaboration between all partners including local planners, the two Trusts and their associated Primary Care Trusts. ■

# FROM THE COUNCILLORS

**S**ome of the new Councillors share their thoughts on attending their first Membership Council meeting on July 14.

**Anita Gray**  
**Patients:**  
*South West London*

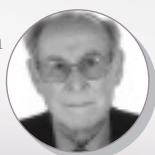


"The Council meeting was very much a two-way process and hearing what staff had to say about what they are doing and the problems they are tackling made me really appreciate the work of the hospital and the improvements being made. Having been a patient for 10 years, I can see much more clearly now how the system works.

"I'm still feeling my way and I'm going to sit in on a meeting of the Patient and Carer Sub-Committee to see if this will be a useful way for me to contribute.

"The meeting confirmed to me that I have done the right thing in becoming a Membership Councillor and I continue to be very impressed with the Royal Marsden."

**Richard Penn**  
**Patients:**  
*South West London*

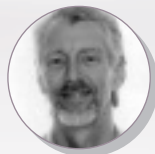


"I arrived for my first Council meeting to be greeted by friendly colleagues, most of them new to me. Impressions? A very open meeting with full and free exchanges – a vast

difference to many board meetings I had attended in the past.

"The professionals patiently and kindly clarified points raised by us lay persons. I am glad I took the opportunity to join the Council and feel that I am developing a sense of pride being part of such a first class organisation. In fact as the seminars develop and I get more involved I shall be able to contribute more."

**Donald Watson**  
**Patients:**  
*South West London*



"I am still 'feeling the way' in my role, but one of my main areas of interest is communication.

"For example, the way in which staff communicate with patients and the way that patients' families and friends communicate with them.

"People often have difficulty in saying the right things to people with cancer."

**Sheila Ann Newsum**  
**Patients:**  
*Kensington and Chelsea*



"I was impressed with the number of councillors attending and the variance of their support areas. I also was most impressed with the fund raising results and the enthusiasm of the fund raising team. The issue that held my attention most was the difficulty that the Royal Marsden has, like other NHS hospitals, in recruiting nursing staff. It helped me acquire a feeling for the importance of this matter particularly when one of the patient councillors commented on the effect nursing staff changes had upon patients. I would be most interested in helping this cause." ■

## YOUR COUNCILLORS

### Elected Councillors

#### Constituency

##### Patients

*East Elmbridge/Mid Surrey*  
Dr Jim Laxton: laxtonchemistry@btinternet.com

*Greater London*  
Susan Nyfield, Helen Rowlands

*Elsewhere in England*  
Sally Mason, Sue Robinson

*South West London*  
Anita Gray, Richard Penn, Donald Watson

*Paediatric/Adolescent*  
James Miller: likoni20@hotmail.com

**Carer**  
Balbir Chowdhary: balbirchowdhary@aol.com,  
Ton Coolen, Ronald Rustin

**Public**  
*Local resident Sutton & Merton*  
Tony Hazeldine  
*Elsewhere in England*  
Robert Shearer: Robert@kentsleigh.demon.co.uk

*Local resident Kensington & Chelsea*  
Sheila Ann Newsum

**Staff**  
*Doctor*  
Prof. Ian Smith: ian.smith@rmh.nhs.uk  
*Nurse*  
Shelley Dolan: shelley.dolan@rmh.nhs.uk  
*Other clinical professional*  
Richard Keane: richard.keane@rmh.nhs.uk  
*Non-clinical*  
Peter Kirkham: peter.kirkham@rmh.nhs.uk

### Nominated Councillors

#### Primary Care Trusts

*Sutton & Merton*  
Ian Ayres  
*Kensington & Chelsea*  
Paul Haigh  
*East Elmbridge & Mid Surrey*  
Alan Kennedy  
*Croydon*  
Sue Arnold: sue.arnold@croydonpct.nhs.uk

Institute of Cancer Research  
Prof. Keith Willison: press@icr.ac.uk

South West London Cancer Network  
Charlotte Joll

West London Cancer Network  
Liz Jones

Cancer Research UK  
Dr Angela Galpine: angela.galpine@cancer.org.uk

Thames Valley University  
TBC following the resignation of  
Prof. Lois Crooke

Borough of Kensington & Chelsea  
Councillor Iain Hanham

If no contact details are shown or you are not on e-mail then please contact your Councillor through the Foundation Trust Office (details on the back page).

When e-mailing your Councillor please put 'Royal Marsden Foundation Trust' in the subject box. ■