

**Together we make
a difference**

**Annual Review
2012/13**

Welcome to our review



Welcome to The Royal Marsden Cancer Charity's annual review. Over the past 12 months, our supporters have helped

The Royal Marsden change the lives of thousands of cancer patients and their families across the UK and worldwide.

Using the money you generously donate and raise for us, we have funded pioneering technology, facilities and services to provide the very best care and treatment. Our world-class experts have also carried out groundbreaking research that is benefiting patients quicker than ever before and moving us all closer to a future beyond cancer.

Spearheading our efforts in translational research is the Centre for Molecular Pathology, which opened on our Sutton site in November 2012. For the first time, it brings together leading clinicians, pathologists and scientists under one roof to find better ways to diagnose and treat cancer. Working side-by-side, these experts are sharing knowledge and expertise to increase their understanding of individual tumour types, helping us to translate even more breakthroughs in the lab into treatments in the hospital.

Your support has also enabled us to continue our commitment to deliver the best diagnosis and treatment. Two new MRI scanners – a 1.5T and 3T – located in our new Imaging Centre at our Chelsea site will enable us to provide detailed images of patients' tumours. The combination of both these scanners on one site will provide our patients with unparalleled cancer care.

Patients needing surgical treatment have also benefited from the valuable support of the charity, with the funding of the Plasma Jet Surgical Device for use in gynaecological oncology surgery. Using this machine, our surgeons are now able to remove or destroy visible deposits of cancer cells from delicate structures without causing harm and without the need to remove the tissue.

Over the past 12 months we also celebrated 10 years of innovation at The Royal Marsden, something that's only been made possible by supporters like you. Launched by HRH The Duke of Cambridge, who appeared in a specially made film, our ten10 campaign looked back on some amazing breakthroughs but also highlighted the need for continued innovation over the coming decade if we are to reach our goal of a future without cancer.

Over the next 10 years, we are committed to make greater leaps forward in cancer research, diagnosis, treatment and care to achieve even better outcomes for our patients and their families. This makes your continuing support of the charity over the next decade more important than ever, because together we can change lives and create a future beyond cancer.

Thank you for supporting The Royal Marsden Cancer Charity.

R. Ian Molson

Chairman

The Royal Marsden Cancer Charity

Cally Palmer CBE

Chief Executive

The Royal Marsden NHS Foundation Trust

A clear vision



The Royal Marsden Cancer Charity exists solely to support the work of The Royal Marsden.

We are committed to using your donations to fund the best equipment, facilities and projects so world-leading experts at the hospital can carry out life-changing work in cancer research, diagnosis, treatment and care.

When you support the charity, you really do help everyone who benefits from the work of The Royal Marsden. Scientists searching for cures. Doctors who depend on the very latest drugs and technology. And, of course, cancer patients and their families throughout the UK and worldwide.

Together, we can keep making life better for people with cancer and strive for a future without it.

Making life-changing differences together



Thanks to the time, energy and money The Royal Marsden Cancer Charity's supporters gave over the past 12 months, The Royal Marsden still stands proudly at the forefront

of cancer research, diagnosis, treatment and care. To show you the positive impact your support is making to the lives of people with cancer, here are some of the headline activities you've made possible in the past year.

Research

Paediatric drug development
£2.55 million donation



The Royal Marsden continues to be a world leader in translating research from the lab into pioneering treatment and care that sets new standards and transforms the outcomes for patients. A shining example of this work is our paediatric drug development unit. Thanks to generous donations from our supporters, which include the Oak Foundation and Tildy's Trust, it is developing and giving early access to new drugs quicker than ever before. Currently, this involves the unit's team carrying out 10 studies in which promising drugs are offered to young patients for the first time to target the four cancers responsible for the majority of childhood cancer deaths.

Diagnosis

Centre for Molecular Pathology
£2.3 million donation



Doubling The Royal Marsden's capacity for molecular diagnostic tests and research into personalised cancer treatments, the CMP is a state-of-the-art facility set to transform thousands of lives. Since opening in November 2012, the centre has enabled world-leading cancer experts to work side by side for the first time. By sharing knowledge and expertise, their aim is to better understand different tumour types and the most effective way to treat them. This vital work is already leading to important breakthroughs and the development of personalised treatment plans for patients faster than ever before.

Treatment

1.5 Tesla and 3.0 Tesla MRI scanners
£6.95 million donation



We are committed to raising £6.95 million to fund a 1.5 and a 3.0 Tesla MRI scanner. The two scanners will allow The Royal Marsden's clinicians to see patients' tumours more clearly than ever before, helping us to deliver pioneering treatments even more accurately. These incredible machines will also allow our imaging experts to explore new and better ways to scan tumours that are currently hard to diagnose and treat because we cannot examine them as well as we'd like to. Plus the scanners will improve the comfort of all patients undergoing scans by providing wider and shorter tunnels and faster scanning times.

Care

Refurbishment of Ellis Ward
£2.4 million donation



Light, bright and carefully designed with patients' needs in mind, Ellis Ward has been offering the highest levels of comfort to women with breast, gynaecological, gastrointestinal and genitourinary cancers since it reopened in June 2012. One patient summed up the quality of care received when she said, "I've been a patient on old Ellis and new Ellis. The standard of care has always been out of this world, but the new ward, and the way it's been organised and designed... what a difference!" Nurses working on the ward say the new layout has also allowed patients to see nursing staff at all times, which is more reassuring to them.

The revolution starts here



The state-of-the-art Centre for Molecular Pathology in Sutton opened in November 2012 and is carrying out revolutionary work to benefit patients at The Royal Marsden and across the UK.

Scientists, pathologists, geneticists and clinicians are now working together under one roof to provide an increasing number of patients with a molecular diagnosis. This is giving our experts a clearer understanding of patients' tumours and the most effective way to treat them.

The centre is also playing a key role in the highly regarded Stratified Medicine Programme (SMP). The aim of the SMP is to see if it's feasible for molecular tests to be implemented across the NHS, helping to lead the way to personalised treatment for every cancer patient in the future. So far, the SMP has involved molecular diagnostics being performed on the tumour samples of 9,000 cancer patients within a set time and at a fixed cost.

The new facilities in the CMP are also allowing our experts to carry out pioneering research to discover how tumours from a wider range of cancer types can be analysed at a molecular level. This includes molecular pathology translational research programmes for paediatric, lung, gastrointestinal and blood and lymphatic system cancers.

Two life-changing benefits for people with cancer

1

Molecular diagnostic tests at the CMP are giving Royal Marsden cancer patients wider access to new treatments and clinical trials.

2

Research in the CMP is identifying how tumours for every cancer can be analysed at a molecular level, paving the way for personalised cancer treatment for all.

Our fantastic supporters helped us donate **£2.3 million** to the building of the Centre for Molecular Pathology.

Carrying out groundbreaking research



Dr David Gonzalez de Castro, Head of the Molecular Diagnostics Laboratory, reveals why the Centre for Molecular Pathology is so important.

What makes the Centre for Molecular Pathology so special?

The new centre is absolutely vital to a move towards personalised medicines that target every cancer patient's individual tumour. The work that is taking place within the centre's four walls really is revolutionising how we're diagnosing and treating patients now, and will have an even greater impact on people's lives in the future.

How has the centre already benefited patients?

Thanks to the centre, more patients at The Royal Marsden with certain cancers are having molecular diagnostic tests. This is helping us understand their tumours better and making more therapies and clinical trials available to them. Also, research is driving us towards our goal of giving every patient at the hospital a personalised molecular diagnosis, no matter what tumour type they have. That's something which will significantly improve treatment and outcomes.

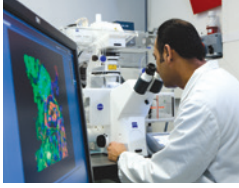
Do you have a message for The Royal Marsden Cancer Charity's supporters?

Thank you. Your generosity really has resulted in the CMP directly benefiting our patients right now. Also, without your support we just couldn't carry out such groundbreaking work in molecular diagnostics – work that in the future could mean the difference between life and death for many patients across the UK and the world.

“The centre will revolutionise the diagnosis and treatment of cancer as we know it.”

Dr David Gonzalez de Castro
Head of the Molecular Diagnostics Laboratory

Be part of a brighter future



Over the past decade, we have helped The Royal Marsden push boundaries and improve standards of excellence

in cancer research, diagnosis, treatment and care. Today, it stands as a world-class cancer centre working at the very forefront of these areas.

As we look forward, we know we are on the verge of pioneering breakthroughs that could improve the lives of thousands of people and give them a future beyond cancer. But for us to achieve these breakthroughs and keep leading the way, we need our supporters and donors to play a vital role for us.

Simply put, we need your help so we can continue investing in the latest technologies, facilities and research at The Royal Marsden. Without this support, we will not be able to make life better for so many people with cancer at The Royal Marsden and across the UK.

Turning research into reality



A major priority for The Royal Marsden is to carry out even more groundbreaking research that turns breakthroughs in the lab into tangible treatments that benefit

patients. Revealing more about this “translational research” and how supporters of The Royal Marsden Cancer Charity can make it a reality is Professor David Cunningham, Director of Clinical Research.

What is translational research?

It refers to the “bench-to-bedside” approach of translating research from the lab into patient treatment and care. This includes the development of new drugs and new ways to carry out radiotherapy, chemotherapy and surgery. What is really fantastic, and what makes us very special, is that we can take a breakthrough from the lab, treat a patient with it, then report back to the lab about what we’ve learnt by treating this individual patient in this particular way.

What progress has The Royal Marsden made in this area?

As part of Europe’s largest comprehensive cancer centre, The Royal Marsden has an outstanding reputation for research and development. This has led to advances in all types of treatments

for cancer patients, helped to set national and international standards of care and established best practice for cancer diagnosis and treatment. But we must continue our work developing the latest cancer treatments and technologies.

What research are you focusing on now?

Taking personalised cancer treatment to the next level. The Royal Marsden, together with its academic partner The Institute of Cancer Research (ICR), has been a world leader in personalised cancer treatment for many years, and our research strategy enhances this work further.

How do you aim to achieve this progression?

Together with the ICR, we are the only National Institute for Health Research (NIHR) Biomedical Research Centre (BRC) dedicated solely to cancer. We translate scientific findings regarding the genetic and molecular causes of cancer into improved treatments, which are then tested in national trials. Our strategy will prioritise the research we have identified as having the most benefit to our patients, ensuring the latest advances in cancer treatment improve their outcomes.

How can The Royal Marsden Cancer Charity’s supporters play a role in this important work?

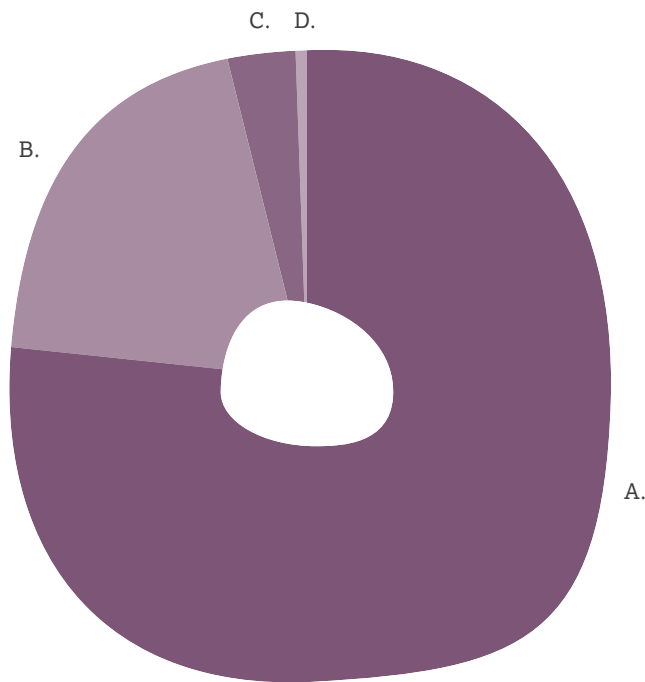
It’s a really exciting time for research. We’ve seen many advances in the past five years in areas such as lung and gastrointestinal cancers and melanoma. This is mainly due to the revolution in molecular diagnostics, which allows us to classify tumours into different subtypes, each of which responds best to different treatments.

The Royal Marsden Cancer Charity’s supporters will allow us to build on this work and grow our clinical and translational research further so we can achieve even better results for our patients. With their support, we will be able to fund the highest-quality research in areas such as molecular diagnostics and immunotherapy. We will also establish The Royal Marsden Clinical Trials Unit to run early-phase trials of new therapies, ultimately providing more targeted therapy treatment options to patients.

“The charity’s supporters will allow us to grow our clinical and translational research further so we can achieve even better results for our patients.”

Professor David Cunningham
Director of Clinical Research

How we spent your money



- A. Charitable support of the hospital £8.4m**
- B. Costs of generating voluntary income £2.1m**
- C. Investment and property management £0.35m**
- D. Governance £0.05m**

A. Charitable support of the hospital

The amount we spent on funding new technology, buildings and research projects for The Royal Marsden totalled £8.4 million last year. Thanks to our supporters' generosity, this investment is what keeps the hospital at the very forefront of cancer diagnosis, treatment, research and care.

B. Costs of generating voluntary income

These include all aspects of fundraising and trading and together represent under 18% of the voluntary income raised. This is one of the most efficient rates among similar charities. The Trustees ensure that expenditure on fundraising activities and governance is carefully monitored and controlled, and expect over any four-year period to keep the level of expenditure of this nature at less than 20% of donations. We continue to strive for improvements, whilst recognising the need for wise investment in our capacity to raise future income.

C. Investment and property management

These costs similarly represent some 18% of our investment income of £1.9 million.

D. Governance

The Board of Trustees is responsible for ensuring that the charity is operating effectively and efficiently. Governance costs include external audit and other costs incurred in support of this objective. Approximately 0.5% of expenditure goes towards governance activity.

For every £1 donated, over 81p was available to spend on pioneering work in cancer research, diagnosis, treatment and care. The rest was used to raise funds for the future.

Future commitments and resources

The pace of research progress and the potential of new opportunities to accelerate benefit to patients drives the need for greater funding.

At 31 March 2013 we had outstanding grants totalling £4 million to be spent in the next two years. However, there are still many more opportunities and funding needs. Since the year end Trustees have approved new grants of more than £9 million and are assessing a number of other significant applications.

Every single pound raised is important to us. Whatever the size of your donation or fundraising we will put it to the best possible use to benefit cancer patients.

For more detail, including our full Annual Report and Financial Statements, visit our page on the Charity Commission website or our website.

How much we raised

Total income



1. Voluntary income **£11.8m**

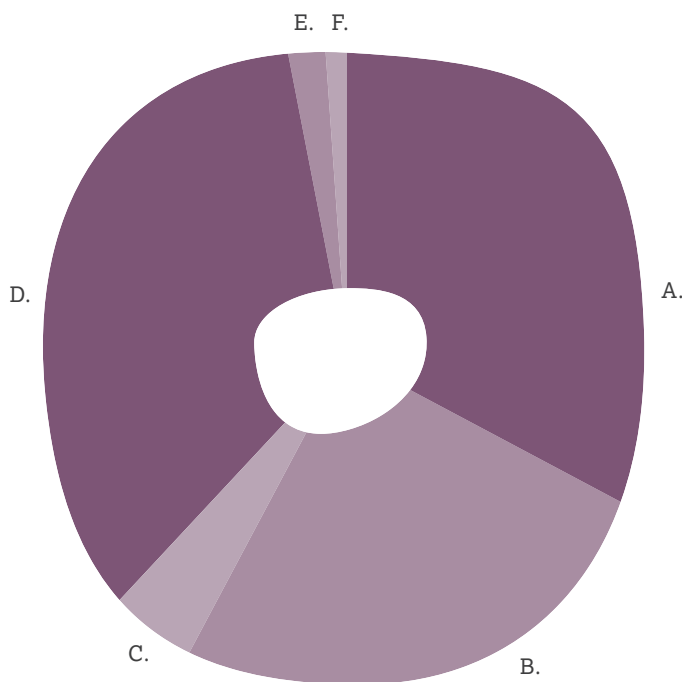
2. Investment income **£1.9m**

3. Other **£0.2m**

Total £13.9m

1. Voluntary income

Together we raised more than £11.8 million in 2012/13. It's an amount that reflects the generosity and hard work of our dedicated supporters over the past year. We are indebted to all these people who know we will use wisely the money they give to fund pioneering work in cancer research, diagnosis, treatment and care.



A. Major gifts and trusts £3.9m

B. Legacies £2.9m

C. Community groups £0.5m

D. Individuals £4.1m

E. Corporate £0.3m

F. Trading £0.1m

2. Investment income

The charity has a portfolio of investments, to support existing grant commitments and to provide working capital for both planned major future commitments and running expenses, which are managed by professional investment managers according to guidelines and responsible policies agreed with the Trustees.

Legacy income is a very important source of funding for our work.

We are grateful to those who have the ability, foresight and belief in our work to leave a bequest in their will.

Trustees

R. Ian Molson

Chairman

The Royal Marsden NHS Foundation Trust

Ex-officio Trustee

Cally Palmer CBE

Chief Executive

The Royal Marsden NHS Foundation Trust

Ex-officio Trustee

Catherine Armitage

Appointed Trustee

Robin Broadhurst CBE

Appointed Trustee (reappointed 14 March 2013)

Professor Martin Gore

Medical Director

The Royal Marsden NHS Foundation Trust

Nominated Trustee

Richard Oldfield

Appointed Trustee

Emmanuel Roman

Appointed Trustee

Alexandra Shulman

Appointed Trustee

Richard Turnor

Non-Executive Director

The Royal Marsden NHS Foundation Trust

Nominated Trustee

The Trustees between them cover a wide range of expertise. The Board, which is advised by the hospital but not governed by it, approves strategic priorities, aligned with those of the hospital, and considers and takes all strategic and other major decisions.

Thank you

The Royal Marsden Cancer Charity, the staff at The Royal Marsden and all our patients and their families would like to thank everyone who has supported us over the past year.

Philanthropist

John & Catherine Armitage
Joy & Stanley Cohen OBE
Friends of The Royal Marsden
The Raz Gold Foundation
Don McCarthy & Children
Oak Foundation
The Presidents Club
Charitable Trust
The Reuben Foundation
Jimmy Thomas
The Weston Family
The Charles Wolfson
Charitable Trust
The Wolfson Foundation

Benefactor

The David Adams Leukaemia
Appeal Fund
The Arbib Foundation
Bank of Scotland Corporate
The Butchers Arms Restaurant
The Derek Butler Trust
Ning Ning Chang Craven
Elayne & Richard Cyzer
Philip Gould Tribute Fund
The Helen Hamlyn Trust
The Paul Hamlyn Foundation
House of Fraser
The Kay Kendall
Leukaemia Fund
The Luck-Hille Foundation
T&J Meyer Family Foundation
Martin Myers
The P F Charitable Trust
Richard & Victoria Sharp

Affiliate

Bookham Amateur
Golf Society
Robert Hogan
Sam Keen Foundation
The Mackintosh Foundation

Nexus Group Holdings Ltd
Paul Murray-Westbrook
The Stanley Sanger
Foundation
Wimbledon Village Stables

Associate

Peter J Allen
Atlantic Trading LLP
Belmont Festival
Bestway Foundation
Victoria Brahm Schild
Brakes
The Dr Lucy M Bull Lectureship
and Research Fund
Carshalton Pantomime
Company
Katie Compson Foundation
The Cooper Family
Cuddington Golf Club
Derrick & Beryl Frost
Hamsey Furniture Co. Limited
David Juda
The Trustees of Mrs Margaret
King's Will Trust
The Dorothy Jacobs Charity
Legal & General
Ross & Deborah Luke
Marlborough House School
Jimmy Knapp Cancer Fund
Debbie Middleton
Ralph Lauren
Reed Business Information
The Revere Charitable Trust
Jim Rymer
Lena Savvides
The Sisterhood
The Peter Stebbings
Memorial Trust
The Stock Exchange Amateur
Boxing Club
Tildy's Trust
Chris & Caroline Wilkinson
The Wyseliot Charitable Trust

Platinum

Richard Barcan
C Brewer & Sons Ltd
The Bernard Coleman Trust
Geraldine Crossland
The Deloitte Foundation
George & Lidia Donath
Alia El-Akabi
The Fairstead Trust
Peter Felton
Jane & Andrew Fenwick
Douglas Fisher
Christine & Richard Freeman
Giovanni & Leila Govi

Nick Gray
Gerald Hawkins
Stephen Kirk
The Raymond and Blanche
Lawson Charitable Trust
The Colin Murray Trust
Salomon Oppenheimer
Philanthropic Foundation
Neil Pennington
George & Mobbs Pitcher
Provincial Grand Lodge of
Surrey
Dusty Springfield
N Jeremy Taylor
Prince of Wales Golf Society
Claire Woods



The Royal Marsden Cancer Charity exists solely to support the work of The Royal Marsden. We fund pioneering projects so the hospital can provide world-class treatment and care for cancer patients, and to support its groundbreaking work in cancer research.

www.royalmarsden.org
philanthropy@royalmarsden.org

Charity Registered Office

The Royal Marsden
Fulham Road
London SW3 6JJ

T 020 7808 2233
F 020 7808 2268



The Royal Marsden Cancer Charity Registered
Charity No.1095197. A charitable company limited
by guarantee registered in England No.4615761